



Building Networks Connecting People Fortifying the Bottom Line



At DataPath, our 25 plus years of experience in integrated communications and information technology has made us a market leader in trusted communications systems, services and end-to-end solutions for mission critical operations.

DataPath distinguishes itself in the global market place by bringing true, economic value to the bottom line through 'Total Solutions' offerings for each requirement. This ensures all program elements – products, systems and support- are factored in to drive success through on-time and on-budget deliveries and cost savings to the customer.

Today, DataPath's installed base exceeds 4,500 satellite terminals deployed worldwide across military, government and broadcast sectors and meets the most demanding communication and information security requirements. In addition, more than one million end-point devices located on all seven continents are managed by our MaxView network monitor and control software.

Our professional services include global field support services, training and documentation services, 24/7 network operations support, information assurance and logistics engineering.

End-to-End Capabilities for Communications and Information Security

The ability to transition across networks on demand and communicate across platforms is an imperative for military, government and commercial applications.

The DataPath 'Total Solutions' concept ensures communications networks meet requirements for access and security, ease-of-use and durability even in the harshest operating environments..

Portable SATCOM Antennas

DataPath offers a full range of high mobility terminals ranging from the ultra-portable Q-Series through the powerful field proven C-Series. Our systems provide the ultimate choice of options for fast, lightweight and easy-to-use satellite communications. Our new Maritime Antenna System delivers uninterrupted communications with virtually no loss of electromagnetic compatibility, radio performance or reliability. For more than 25 years, military, government and commercial newsgathering organizations have relied on DataPath for fast, durable, portable satellite antenna terminals for maximum flexibility and high value.



Transportable Hubs

To continually support changing mission profiles, deployed military units need flexible access to military and commercial satellite networks. These units need reliable equipment with the ability to rapidly deploy to support both long and short term operations. DataPath's Series 3000 multi-band network hubs deliver the operational flexibility, capacity, connectivity and control required to ensure mission success anywhere in the world. With more than 100 units deployed across 5 continents, military users have relied on DataPath transportable network hubs for more than a decade, operating on legacy and cutting edge network architectures.



SATCOM Transportable Terminal

The DataPath rugged, SATCOM Transportable Terminal (STT) sets the standard for towable systems, and can be towed anywhere by a range of military vehicles (HMMWV and protected mobility vehicles) or lifted by helicopter. The STT is designed to establish secure voice, video and data communications virtually anywhere - fast. Tested in challenging conditions and demanding operations throughout the world, our combat proven solution can be relied upon to deliver satellite communications in the harshest environments.



At Your Service

Professional Services

At DataPath, we understand that designing a network is only the beginning. In order to install and maintain networks at top performance over the long haul, customers often need to call upon outside expertise for specialized tasks such as field services, integrated logistics support or equipment repairs, resets, overhauls, and upgrades. DataPath has the proven experience to provide a wide range of professional services that help extend the life of our customers' critical communications investments.



Bringing it All Together

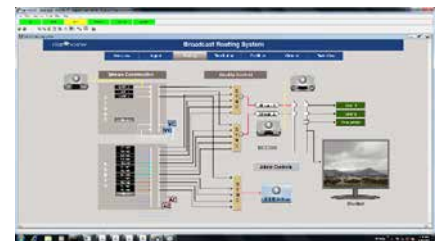
MaxView® Network Management System

DataPath's powerful MaxView® software for network automation and control is ideally suited to monitor and manage all equipment, elements and service applications common in most Network Operation Centers (NOCs).



By providing a centralized view and control of your entire network, MaxView allows you to improve operational efficiency and incident response time.

MaxView® Enterprise™, the latest release of the software, offers major next-generation enhancements to the user experience and analytics. It employs a high-performance, mobile responsive web platform, so you can securely manage your networks from virtually any web-enabled device.



Keeping it Secure

MaxDefense™ Cybersecurity

Threats to mission-critical networks are everywhere. Even a common virus can cause major damage impacting productivity, privacy, and shareholder



value. Robust cybersecurity is imperative. Customers can rely on DataPath to provide expert cybersecurity solutions that are easy to understand. We leverage a twenty-five-year track record of securing U.S. Department of Defense critical infrastructure and seasoned, certified cyber professionals to proactively identify and respond to network vulnerabilities.

Network Security Planning

Customers rely on DataPath to identify and mitigate security risks by producing customized security plans, ranging from a single area to comprehensive, overarching IT security.

DataPath's Managed Security Offerings include 24x7x365 Monitoring Service. Our comprehensive service from end-point to the cloud proactively monitors networks, notifies of events, and provides as-needed remediation support to minimize interruptions.

For more information, visit www.DataPath.com or contact us at:

U. S. Headquarters

2205 Northmont Parkway Duluth, GA 30096 USA
+1 678 597 0300
+1 866 855 3800 (toll free)

International AB

Vågögatan 6, P.O. Box 1261 SE-164 29 Kista, Sweden
+4687285000

DataPath Global Services

6170 Guardian Gateway, Suite 112 Aberdeen
Proving Ground, MD 21005 USA
+1 866 855 3800 (toll free)

