

OVERVIEW

DataPath's MaxView® Monitor & Control System is a powerful Windows solution that enables you to see the state of your entire network, control multi-vendor devices, automate complex service tasks, and unify disparate systems into one view.

MaxView enables network operators to bring existing equipment and next-generation networks under one management system. In addition, it allows them to automate service applications such as Pass Scheduling, Notifications, Redundancy, Configuration Management, and Site Diversity Switching.

MaxView has been installed on systems ranging from single terminals to large complex networks. MaxView's architecture ensures that as your network grows, it will scale up to a global network with no impact on performance. This enables large customers with thousands of devices and hundreds of sites to reduce operational complexity by having a single view of the entire network. By eliminating the need for separate proprietary management systems, MaxView minimizes operational complexity and cost.

By simplifying operations, MaxView can help solve problems before they impact the business. This can lead to improved quality of service (QoS), customer satisfaction and revenue. MaxView provides fully web-enabled access so your operators can securely manage your system from anywhere. Use enhanced security to ensure your system is up to date with the latest patches while maintaining lowest-privilege access for your operators.

MaxView support provides 24/7 assistance to handle any unknowns your operators face; whether it's questions or reporting problems, we stand ready to assist. DataPath also provides additional security information assurance support packages if you need more comprehensive assistance on security compliance and have a commitment to meeting NIST best practices.

MaxView's rich 25-year history shows it is a proven solution for hybrid satellite and terrestrial network environments. It is installed and supported on more than 4,000 systems in 40 countries on all seven continents for commercial and government customers.

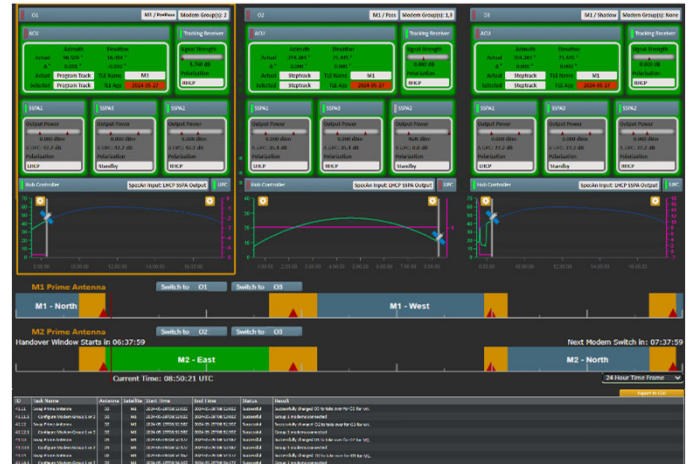


Figure 1 - Pass Scheduling Summary Page Example

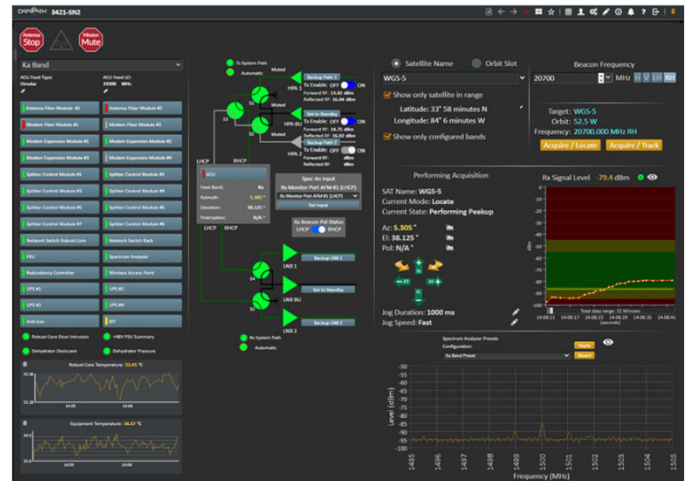


Figure 2 – RF View Summary Page Example

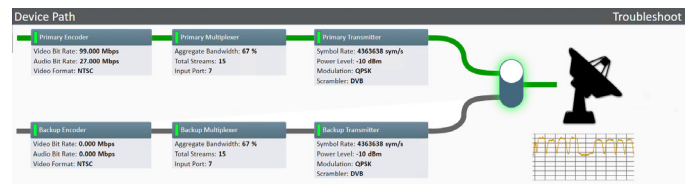


Figure 3 – Hardware Device Redundancy Example



Figure 4 – Workflow ACU Access Example



KEY FEATURES & BENEFITS

- Monitor and Control devices, applications, services, and sites
- Vendor Agnostic Management of Network Elements
 - Supports Device Communication protocols using SNMP, Serial, Contact Closure, TCP/UDP Sockets, and REST
- Scalable for large sites or global multi-site systems
- Web-Based User Interface
 - Customized Views (Hierarchical, Service/Mission, Workflow)
 - Device Quick Views & Full Consoles
 - Customizable User Dashboards
 - Customer Web Designer Capability
- Device Configuration Management
 - Quickly Save/Restore device configurations
- Automate Complex Tasks
 - Pass Scheduling and Handover Events
 - Terminal Startup and Shutdown Workflow tasks
 - Satellite Acquisitions and ACU operations
 - Mission Activations and Decommissioning
 - Device and System Redundancy Options
- Scheduled Reports for Email or Export Configurable for Device and User Events
- Third Party Integration Capability to provide other interface or system integration into MaxView platform
- Widely used open source IAM security module including User, Group, Device, and Page Access Options
- Strengthening our security framework to align with NIST best practices
- Integrated Self Service Technical Support
- Windows Home and Server OS support

