



OVERVIEW

DataPath's MaxView® Network Management System is a powerful solution that enables you to see the state of your entire network, control multi-vendor devices, automate complex service tasks, and unify disparate systems into one view.

MaxView enables network operators to bring existing equipment and next-generation networks under one management system. In addition, it allows them to automate service applications such as Uplink Power Control, Service Management and Site Diversity Switching.

MaxView has been installed on systems ranging from single terminals to large complex networks. MaxView's architecture ensures that as your network grows, it will scale up to a global network with no decrease in performance. This enables large customers with thousands of devices and hundreds of sites to reduce operational complexity by having a single view into the entire network. By eliminating the need for separate proprietary management systems, MaxView minimizes operational complexity and cost.

By simplifying operations, MaxView can help solve problems before they impact the business. This can lead to improved quality of service (QoS), customer satisfaction and revenue.

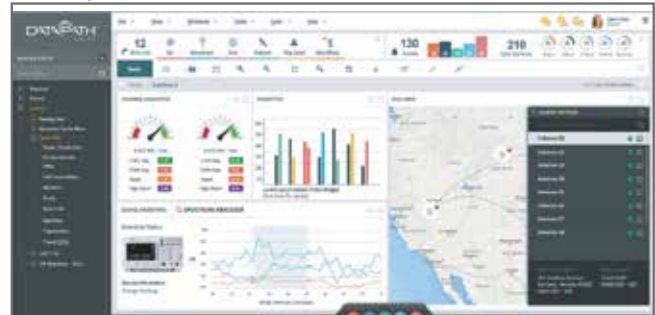
MaxView Enterprise provides for multi-platform, fully web-enabled access so your operators can securely manage your system from anywhere. Use the enhanced analytics engine and gain insight of your network to offer maximum uptime and improved SLA's for your customers.

MaxView is a proven solution for hybrid satellite and terrestrial network environments. It is installed and supported on more than 4000 systems in 40 countries on all seven continents.

KEY FEATURES

- Monitors and controls devices, applications, services and sites
- Manages network elements regardless of vendor or device type
- Scalable for large networks of thousands of devices and hundreds of sites
- Has built-in automation tools to create functionality without programming
- Provides robust reporting including automatically scheduled and ad hoc reports
- Offers safe, secure access to management and government security guidelines

Track Key Performance Indicators (KPIs)



Service Management



Operator Workflows



KEY BENEFITS

Integrated Self Service Technical Support

- Improves operator efficiency with built-in continuous learning through integrated technical manuals and training multimedia

End-to-end Management

- MaxView monitors, controls and automates at the device, application, site or service level

Device and Vendor Agnostic

- MaxView monitors and controls devices and external systems, regardless of vendor and device type

Scalability

- Supports large installations with hundreds of separate sites and thousands of devices

Advanced Visualization Platform

- Presents real-time, relevant data through personalized workflows and dashboards

Automation Tools

- Create automation without programming using point-and-click tools
- Simplify even the most complex operational procedures

Alarm Correlation

- Performs analysis of root cause based on customer policy and takes automatic actions for recovery

Streamlined Reporting

- Create new reports or customize existing reports without writing code
- MaxView allows automatic report scheduling based on pre-set criteria and the ability to customize ad hoc reports without writing code
- Schedule reports to be run and distributed automatically

Device Driver Kit

- Scripting Environment allows users to create device drivers without programming experience

Management Anywhere

- Allows secure monitoring via Internet connection
- Access full management capabilities through mobile platforms like tablets and smart phones

High Availability Support

- MaxView has been proven in extreme and harsh environments, from the Arctic to Antarctic

Platforms Supported

- Red Hat® Linux® 6.5
- Windows® 7, 8 and 10 operating systems
- Windows Server® 2008, 2012 and 2016 operating systems



sales@datapath.com

datapath.com